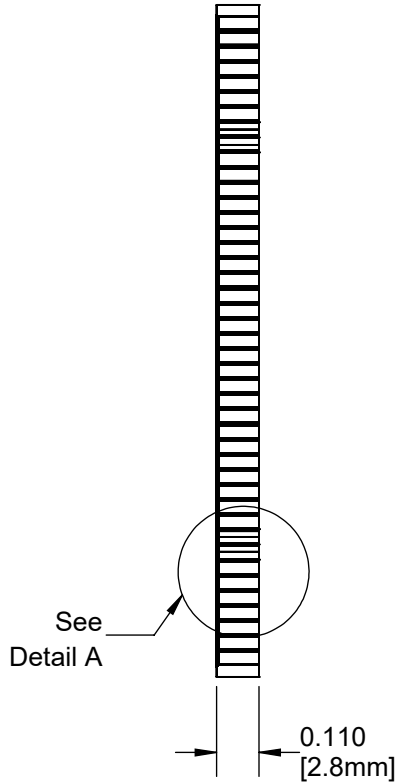
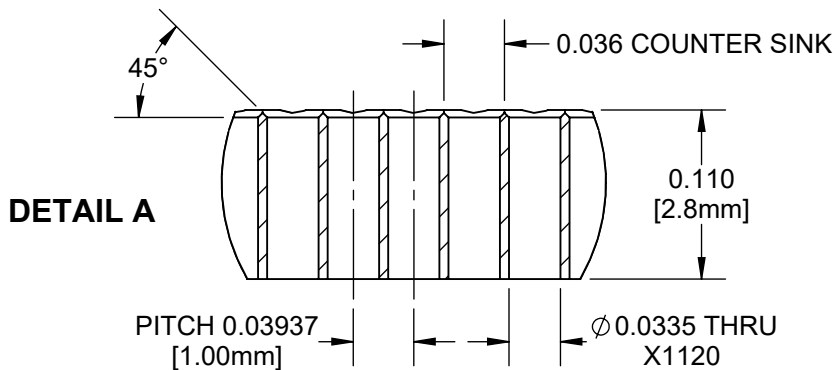
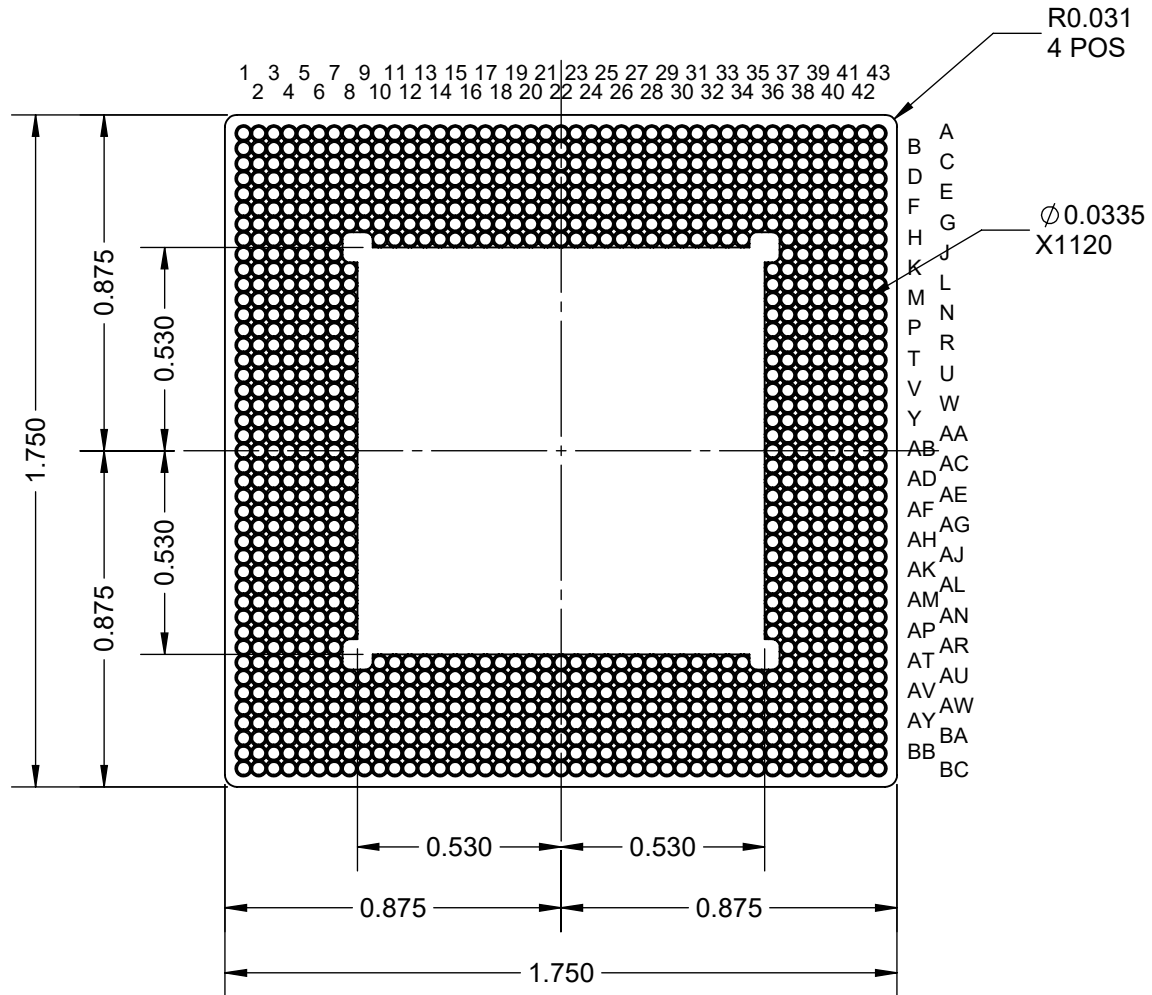


SIDE VIEW



TOP VIEW

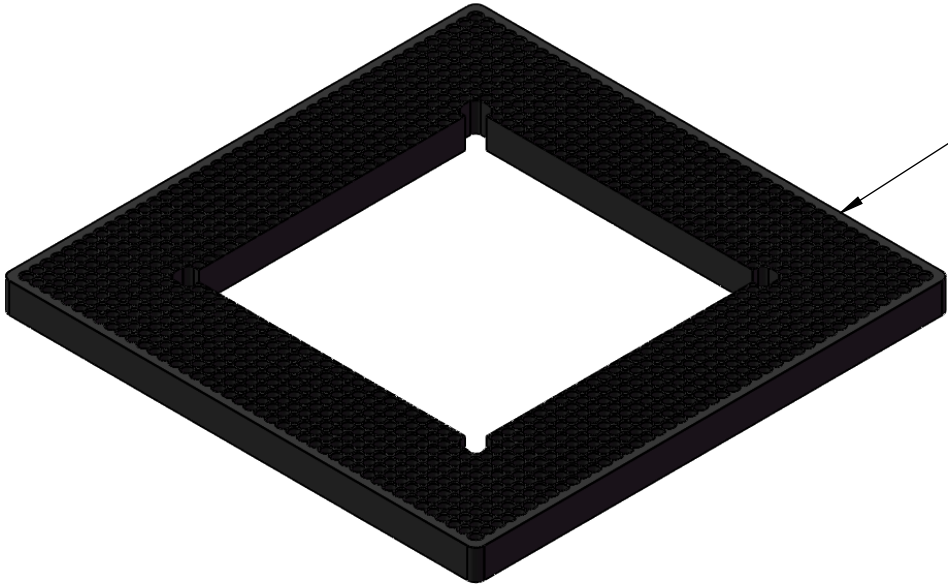


NOTES:

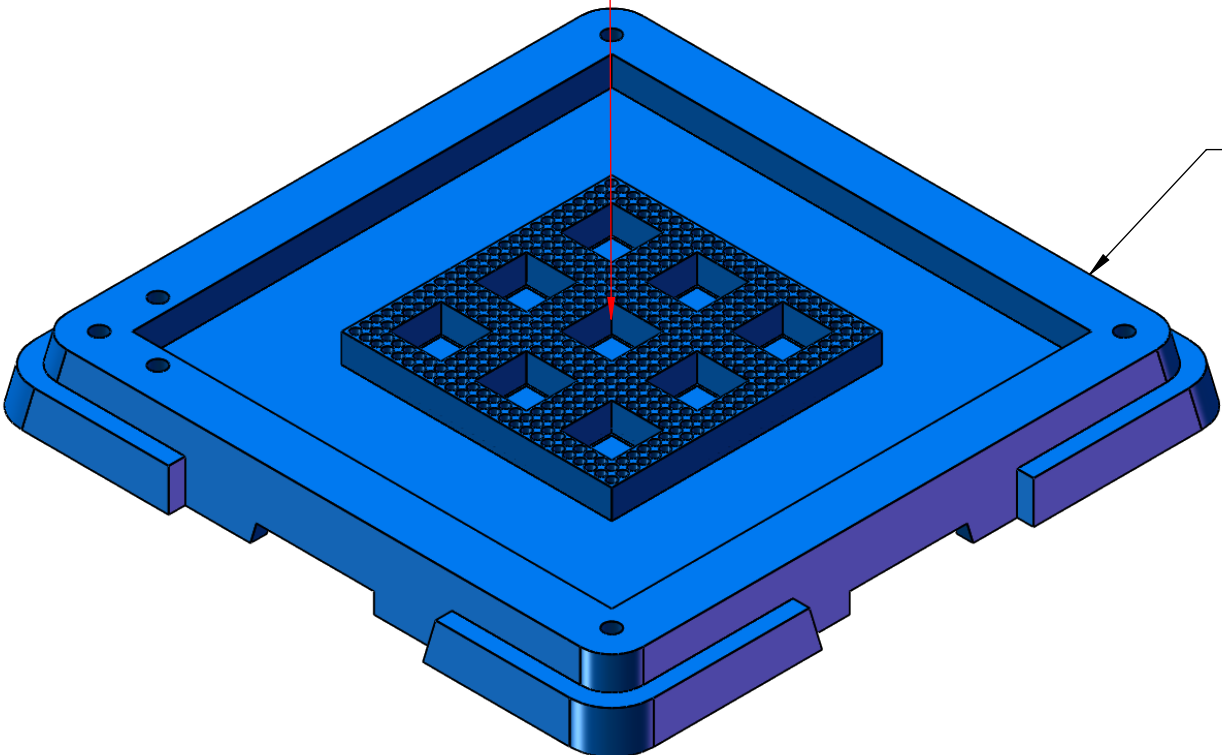
1. DIMENSIONS IN INCH UNLESS OTHERWISE STATED.
2. MATERIAL BLACK PC WITH CARBON POWDER.
3. ESD $10^4 \sim 10^6 \Omega$.

APPROVALS	DATE	TopLine®			
DRAWN T. Au	11/19/2019				
ENG M. Hart	11/19/2019	TITLE CCGA1849 TRAY ADAPTER 45mm x 45mm			
MFG		SCALE 2:1	SIZE A	DRAWING NO. 021432	REV A
QA					
CUST		DO NOT SCALE DRAWING			SHEET 1 OF 4
REVISED					

EXPLODED VIEW



**DWG 021432
ADAPTER**



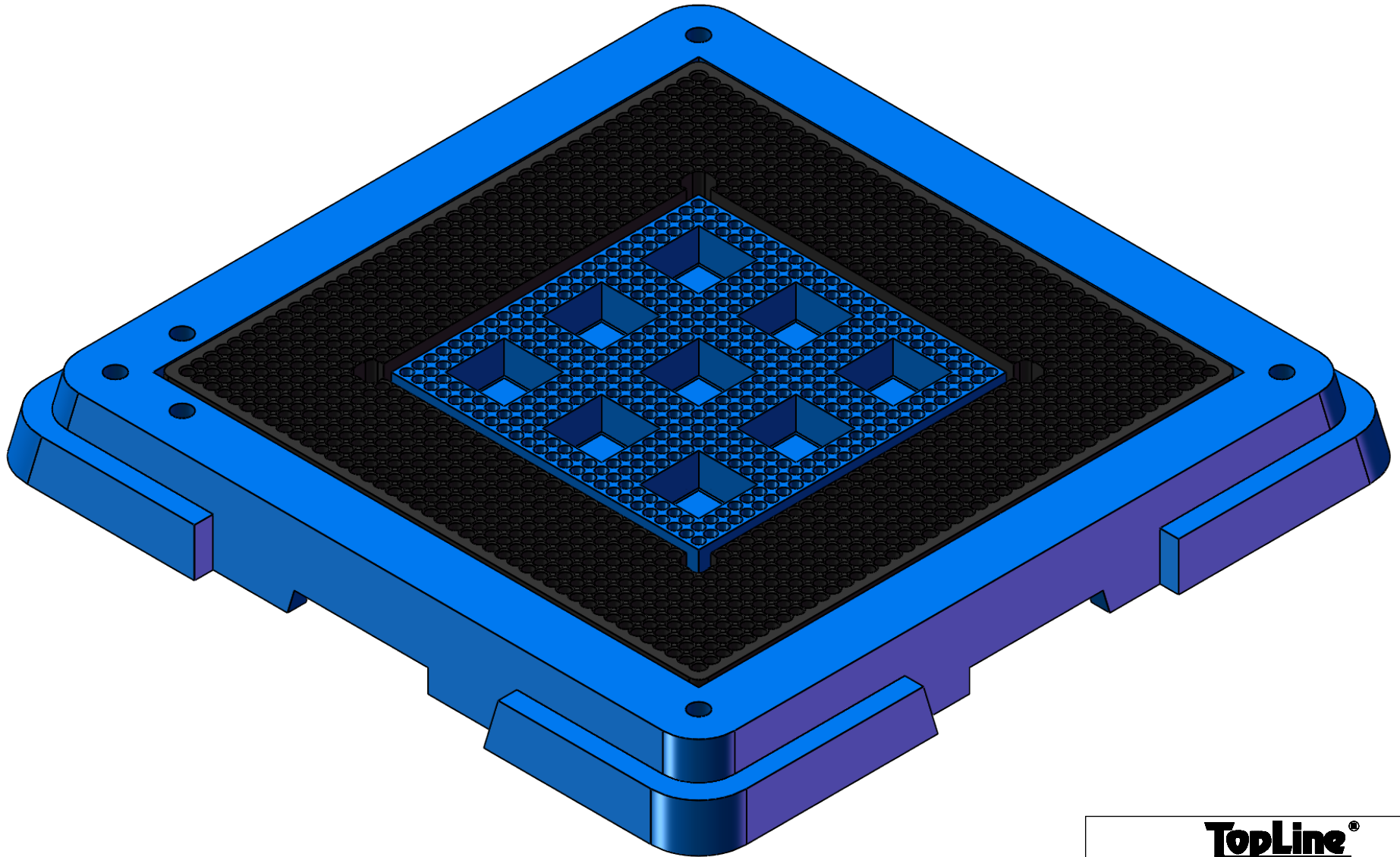
**DWG 031000
BLUE CCGA**



TITLE CCGA1849 TRAY ADAPTER
45mm x 45mm

SCALE 2:1	SIZE A	DRAWING NO. 021432	REV A
--------------	-----------	-----------------------	----------

MODEL ASSEMBLY



TopLine[®]

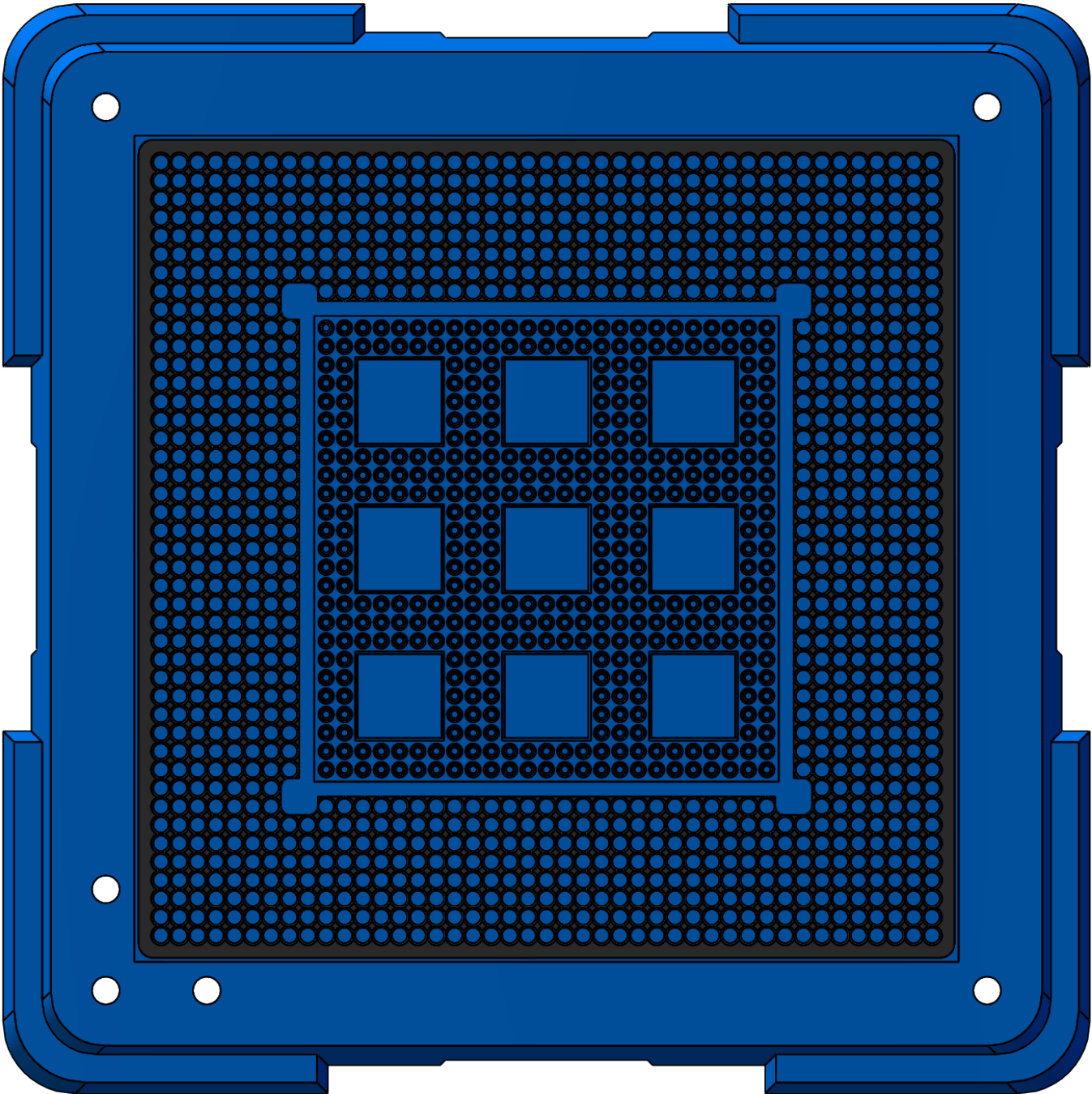
TITLE CCGA1849 TRAY ADAPTER
45mm x 45mm

SCALE	SIZE	DRAWING NO.	REV
3:1	A	021432	A

DO NOT SCALE DRAWING

SHEET 3 OF 4

MODEL TOP



TopLine[®]			
TITLE CCGA1849 TRAY ADAPTER 45mm x 45mm			
SCALE 3:1	SIZE A	DRAWING NO. 021432	REV A
DO NOT SCALE DRAWING			SHEET 4 OF 4